



# Multi-Compartment Trays & Lids



## Convenience.



Sturdy, stackable bases and lids with easy-open tabs enhance consumer satisfaction

## Presentation.



Crystal-clear lids showcase foods. Round and rectangle options offer merchandising flexibility

## Efficiency.



A range of cell counts and capacities to meet every need

Inspiration in Every Package™



# Rectangular Trays, Lids & Combos

Wide variety of volumes and configurations, including upside down and right side up designs

Crystal clear lids showcase foods

Tight corner/side seals ensure leak resistance



Sturdy, stackable bases and flat lids with easy open tabs

Both clear and black bottom options available

## Dip Cup Designs: Right Side Up

## Dip Cup Designs: Upside Down

1 Round

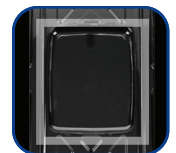
1 Round w/  
Split Comp.

2 Round

Round Area

Square Area

Rectangular Area





# Rectangular Tray, Lid & Combos



## 11" x 7" Rectangular Tray, Lid & Combos

Image	Part No.	Description	Material	Color Tray/Lid	Height (in.)	Cap. Excluding Dip Cup (fl. oz.)	Case Wt. (lbs.)	Sleeve Pack	Case Pack	Cube (ft <sup>3</sup> )	Ti x Hi (TL)
	1321	3-Comp. Tray	PET	Clear	2.25	60	18.86	200	200	3.44	6 x 4
	1140	Lid for 3-Comp. Tray	PET	Clear	0.50	48	12.83	200	200	3.44	6 x 2
A	1174	Single Comp. Tray w/ Dip Cup and Lid	PET	Clear/Clear	2.25	55	21.62	100	100	3.44	6 x 4
B	1297	4-Comp. Tray w/ Dip Cup and Flat Lid	PET	Clear/Clear	1.63	48	19.43	100	100	3.44	6 x 4
C	1644	6-Comp. Tray w/ Dip Cup and Flat Lid	PET	Clear/Clear	1.25	-	19.81	100	100	3.44	6 x 4
D	1141	4-Comp. Tray w/ Dip Cup and Flat Lid	PET	Clear/Clear	2.25	48	14.61	100	100	3.44	6 x 4
E	1751	4-Comp. Tray w/ Dip Cup and Flat Lid	PET	Clear/Clear	2.25	-	19.43	100	100	3.44	6 x 4
F	1310	4-Comp. Tray w/ Dip Cup and Flat Lid	PET	Black/Clear	2.25	48	20.00	100	100	3.44	6 x 4
G	1276	6-Comp. Tray w/ Dip Cup and Lid	PET	Clear/Clear	2.25	-	21.63	100	100	3.44	6 x 4
	1701	4-Comp. Tray w/ Dip Cup and Flat Lid	PET	Clear/Clear	2.00	54	9.94	100	100	3.44	6 x 4
H	1340	6-Comp. Upside Down Container	PET	Black/Clear	1.25	-	16.22	100	100	3.44	6 x 4



# Rectangular Trays, Lid & Combos



## 14" x 11" Rectangular Tray, Lid & Combos

Image	Part No.	Description	Material	Color Tray/Lid	Height (in.)	Cap. Excluding Dip Cup (fl. oz.)	Case Wt. (lbs.)	Sleeve Pack	Case Pack	Cube (ft <sup>3</sup> )	Ti x Hi (TL)
A	1411	6-Comp. Tray w/ 2 Dip Cups and Flat Lid	PET	Black	2.25	96.00	21.00	60	60	3.44	6 x 4
B	1781	6-Comp. PET Tray w/ Dip Cup	PET	Clear	3.30	120.00	34.17	100	100	3.76	6 x 4
C	1683	Lid for 6-Comp. PET Tray w/ Dip Cup	PET	Clear	0.50	-	22.85	200	200	3.44	6 x 4
D	1191	4-Comp. Tray w/ Dip Cup and Lid	PET	Clear/Clear	2.00	72.00	17.22	60	60	3.44	6 x 4
E	1118	4-Comp. Tray w/ Dip Cup and Lid	PET	Clear/Clear	2.25	96.00	18.57	60	60	3.44	6 x 4
	1663	4-Comp. Tray w/ Dip Cup and Lid	PET	Clear/Clear	2.25	96.00	18.30	60	60	3.44	6 x 4
F	1736	4-Comp. Tray w/ Dip Cup and Lid	PET	Clear/Clear	2.75	110.00	20.28	60	60	3.44	6 x 4
G	1228	4-Comp. Tray w/ Dip Cup and Lid	PET	Clear/Clear	3.13	128.00	18.80	60	60	3.44	6 x 4
	1157	4-Comp. Tray w/ Dip Cup and Lid	PET	Clear/Clear	4.75	192.00	25.00	50	50	3.44	6 x 4



# Rectangular Tray/Lid Combos



## 14" x 11" Rectangular Tray & Lid Combos

Image	Part No.	Description	Material	Color Tray/Lid	Height (in.)	Cap. Excluding Dip Cup (fl. oz.)	Case Wt. (lbs.)	Sleeve Pack	Case Pack	Cube (ft <sup>3</sup> )	Ti x Hi (TL)
A	1439	4-Comp. Tray w/ Dip Cup and Lid	PET	Black/Clear	2.00	72.00	19.87	60	60	3.44	6 x 4
B	1307	4-Comp. Tray w/ Dip Cup and Flat Lid	PET	Black/Clear	2.25	96.00	21.00	60	60	3.44	6 x 4
C	1231	5-Comp. Heat Sealable Tray w/ Dip Cup, Split Comp. and Lid	PET	Clear/Clear	2.75	110.00	20.31	60	60	3.44	6 x 4
D	1358	6-Comp. Tray w/ Dip Cup and Lid	PET	Clear/Clear	2.25	90.00	20.31	60	60	3.44	6 x 4
	1247	6-Comp. Tray w/ Dip Cup and Lid	PET	Clear/Clear	2.25	96.00	17.25	60	60	3.44	6 x 4
E	1784	6-Comp. Tray w/ Dip Cup and Lid	PET	Black/Clear	2.00	96.00	18.41	60	60	3.44	6 x 4
F	1384	6-Comp. Upside Down Tray w/ Dip Area and Lid	PET	Black/Clear	1.25	96.00	16.17	60	60	3.44	6 x 4
G	1334	6-Comp. Upside Down Tray w/ Rectangular Dip Area and Lid	PET	Black/Clear	1.56	-	15.99	60	60	3.44	6 x 4
H	1336	6-Comp. Upside Down Tray w/ Square Dip Area and Lid	PET	Black/Clear	1.56	-	18.01	60	60	3.44	6 x 4
	1294	6-Comp. Tray w/ Dip Cup and Flat Lid	PET	Black/Clear	2.25	96.00	21.00	60	60	3.44	6 x 4



# Round Trays & Lids

Wide variety of compartment and dip cup options

Round and square dip cup designs available

Positive rim seals ensure leak resistance

Sturdy, stackable bases and lids with easy open tabs



## Lid Styles

Ring



Flat



Rose



Daisy



Starburst



A



B



C



D



E



F



G

## Round 10.25" Tray & Matching Lids

Image	Part No.	Description	Material	Color Tray/Lid	Dia. (in.) x Ht. (in.)	Cap. Excluding Dip Cup (fl. oz.)	Case Wt. (lbs.)	Sleeve Pack	Case Pack	Cube (ft <sup>3</sup> )	Ti x Hi (TL)
A	1625	6- Comp. Tray	PET	Clear	10.25 x 1.80	48.00	10.60	100	100	2.77	8 x 5
B	1146	Ring Lid	PET	Clear	10.25 x 0.65	-	12.00	200	200	3.79	6 x 4
C	1147	Daisy Lid	PET	Clear	10.25 x 1.40	-	13.00	200	200	3.79	4 x 6
D	1188	Rose Pattern Lid	PET	Clear	10.25 x 1.40	-	15.00	200	200	3.79	6 x 4

## Round 13" Trays & Matching Lids

Image	Part No.	Description	Material	Color Tray/Lid	Dia. (in.) x Ht. (in.)	Cap. Excluding Dip Cup (fl. oz.)	Case Wt. (lbs.)	Sleeve Pack	Case Pack	Cube (ft <sup>3</sup> )	Ti x Hi (TL)
E	1768	4-Comp. Tray w/Dip Cup	PET	Clear	13.00 x 2.25	64.00	300.00	1320	1320	39.13	1 x 1
F	1416	5-Comp. Tray w/Dip Cup	PET	Clear	13.25 x 3.92	156.00	18.18	80	80	3.00	9 x 4
	1600	Ring Lid for 13.25" Tray	PET	Clear	13.38 x 0.75	-	20.80	200	200	3.00	9 x 4
G	1769	Ring Lid for 13.00" Tray	PET	Clear	13.00 x 0.75	-	200.00	1980	1980	39.13	1 x 1



# Round Trays & Lids



## Round 10.25" Tray & Lid Combos

Image	Part No.	Description	Material	Color Tray/Lid	Dia. (in.) x Ht. (in.)	Cap. Excluding Dip Cup (fl. oz.)	Case Wt. (lbs.)	Sleeve Pack	Case Pack	Cube (ft <sup>3</sup> )	Ti x Hi (TL)
A	1086	3-Comp. Tray w/Dip Cup and Ring Lid	PET	Clear/Clear	1.75	36.00	14.71	100	100	3.79	6 x 4
	1378	3-Comp. Tray w/Rose Pattern Lid	PET	Clear/Clear	2.63	42.00	20.39	100	100	3.79	6 x 4
	1169	6-Comp. Tray w/Dip Cup and Ring Lid	PET	Clear/Clear	1.80	56.00	20.60	100	100	3.79	4 x 6
	1636	6-Comp. Tray w/Flat Lid	PET	Clear/Clear	1.80	48.00	15.65	100	100	3.79	6 x 4
B	1049	4-Comp. Juice Catcher Tray w/Dip Cup and Ring Lid	PET	Clear/Clear	2.25	48.00	14.42	100	100	3.79	6 x 4
	1484	3-Comp. Tray w/ Flat Lid	PET	Clear/Clear	1.75	54.00	9.17	100	100	3.79	4 x 6
	1395	3-Comp. Tray w/Rose Pattern Lid	PET	Clear/Clear	1.75	54.00	9.13	100	100	3.79	6 x 4
C	1773	3-Comp. Tray w/Starburst Lid	PET	Clear/Clear	1.75	54.00	9.13	100	100	3.79	6 x 4
	1314	3-Comp. Tray w/Ring Lid	PET	Clear/Clear	1.75	54.00	14.60	100	100	3.79	6 x 4
	1112	1-Comp. Tray w/Dip Cup and Ring Lid	PET	Clear/Clear	1.64	51.00	9.13	100	100	3.79	4 x 6
	1053	3-Comp. Tray w/Dip Cup and Ring Lid	PET	Clear/Clear	2.50	60.00	14.42	100	100	3.79	6 x 4
	1091	4-Comp. Tray w/Ring Lid	PET	Clear/Clear	1.86	60.00	8.94	100	100	3.79	4 x 6
D	1046	4- Comp. Tray w/Ring Lid	PET	Clear/Clear	2.90	64.00	15.42	100	100	3.79	6 x 4
	1048	4-Comp. Tray w/Dip Cup and Ring Lid	PET	Clear/Clear	2.90	64.00	15.65	100	100	3.79	6 x 4
	1322	4-Comp. Tray w/Dip Cup and Flat Lid	PET	Clear/Clear	2.90	64.00	16.02	100	100	3.79	6 x 4
	1507	4-Comp. Tray w/Rose Pattern Lid	PET	Clear/Clear	2.25	64.00	9.13	100	100	3.79	6 x 4
	1657	4-Comp. Tray w/Ring Lid	PET	Clear/Clear	2.90	64.00	16.67	100	100	3.79	4 x 6
	1783	4-Comp. Tray w/Flat Lid	PET	Clear/Clear	2.90	64.00	15.79	100	100	3.79	6 x 4
E	1047	4-Comp. Tray w/Flat Lid	PET	Clear/Clear	2.25	64.00	14.86	100	100	3.79	6 x 4
	1595	4-Comp. Tray w/Dip Cup and Flat Lid	PET	Clear/Clear	2.50	64.00	14.73	100	100	3.79	6 x 4
F	1357	4-Comp. Tray w/Rose Pattern Lid	PET	Clear/Clear	3.00	96.00	16.12	100	100	3.79	6 x 4



# Round Trays & Lids



## Round 13.25" Tray & Lid Combos

Image	Part No.	Description	Material	Color Tray/Lid	Height (in.)	Cap. Excluding Dip Cup (fl. oz.)	Case Wt. (lbs.)	Sleeve Pack	Case Pack	Cube (ft <sup>3</sup> )	Ti x Hi (TL)
A	2047	4-Comp. Tray w/Dip Cup and Ring Lid	PET	Black/Clear	1.75	72.00	19.00	50	50	3.00	9 x 4
B	1192	4-Comp. Tray w/Dip Cup and Ring Lid	PET	Clear/Clear	1.75	72.00	19.00	50	50	3.00	9 x 4
	2046	4-Comp. Tray w/Dip Cup and Ring Lid	PET	Black/Clear	2.02	88.00	19.00	50	50	3.00	9 x 4
C	1106	4-Comp. Tray w/Dip Cup and Ring Lid	PET	Clear/Clear	2.38	104.00	19.00	50	50	3.00	9 x 4
D	1104	4-Comp. Tray w/Dip Cup and Ring Lid	PET	Clear/Clear	2.80	124.00	18.49	50	50	3.00	9 x 4
	1278	4-Comp. Tray w/Square w/Dip Cup and Ring Lid	PET	Clear/Clear	2.80	140.00	18.49	50	50	3.00	9 x 4
	1103	4-Comp. Tray w/Dip Cup and Ring Lid	PET	Clear/Clear	3.94	176.00	18.50	50	50	3.00	9 x 4
E	1241	Heat Sealable PET 5-Comp. Tray w/Dip Cup and Ring Lid	PET	Clear/Clear	3.15	120.00	19.00	50	50	3.00	9 x 4

## Round 15.25" Tray & Lid Combos

Image	Part No.	Description	Material	Color Tray/Lid	Height (in.)	Cap. Excluding Dip Cup (fl. oz.)	Case Wt. (lbs.)	Sleeve Pack	Case Pack	Cube (ft <sup>3</sup> )	Ti x Hi (TL)
F	1115	5-Comp. Tray w/Dip Cup and Ring Lid	PET	Clear/Clear	3.00	180.00	16.00	20	20	2.80	6 x 5
	1067	5-Comp. Tray w/Dip Cup and Ring Lid	PET	Clear/Clear	3.95	200.00	16.00	20	20	2.80	6 x 5

	Temperature Range							
	Material	Flash Freeze -40° F	Freezer -15°-15° F	Refrigerator 33°-47° F	Room Temp. 72° F	Warming Temp. 150°-200° F	Microwave 250° F	Oven 400° F
	Polyethylene Terephthalate (PET)	-20° F ← → 120° F						

Product information is subject to change.  
 Note: These are typical values, based on testing and published guidelines. They are not intended for use as limiting specifications nor as a substitute for product testing under your specific conditions. D&W Fine Pack assumes no liability whatsoever in connection with the use of information or findings contained herein.



D&W Fine Pack LLC • 777 Mark Street • Wood Dale, Illinois 60191  
 Tel. 877.423.3937 • www.dwfinepack.com  
 © 2024 D&W Fine Pack LLC, All Rights Reserved

Inspiration in Every Package™