

Respect the Food!®

# Processor Case Ready Trays



## EFFICIENCY.



**PRODUCTION-READY**  
Engineered For  
Streamlined Filling  
And Handling

## RESPONSIBILITY.



**C-GREEN® BASE MATERIAL**  
Cuts Oil-based Resin  
Usage By 35%  
Reusable and Recyclable\*

## FOOD QUALITY.



**YOUR FOOD AT ITS BEST**  
From Freezer to Microwave,  
These Containers Truly  
Respect the Food

\*Recyclable in communities where facilities exist



Respect the Food!®



## ENGINEERED FOR PRODUCTION EFFICIENCY AND OPTIMAL FOOD QUALITY.

- Our Case Ready trays can be produced in either oxygen-barrier or non-barrier (NF) versions to meet the demands of the application.
- All of our processor trays can be customized by lamination to EVOH, PE or PP-based films to meet application requirements and ensure that the sealant layer is compatible with the appropriate lidding film.
- D&W case ready barrier trays are made with mineral filled polypropylene and available in Industry standard footprints. When gas-flushed and sealed with the appropriate lidding film, these trays provide a modified atmosphere package (MAP) that extends shelf life via a multi-layer oxygen-barrier film laminated to the inner surface for high speed sealing. Additional sizes and colors are available upon request.



[dwfinepack.com](http://dwfinepack.com)

# Processor Case Ready Trays



CT07-3-164NF



CT07-3-164NFW-1



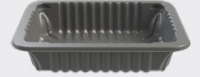
CT07-3-164W-1



CT07-3-164SW



CT07-3-191NFW-2



CT07-3-191W



CT07-3-200SW



CT07-3-300NFW



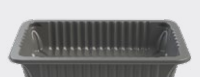
CT07-3-450W-1



CT07-10-140W-1



CT07-10-200NF-1



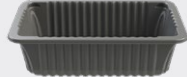
CT07-10-200W-1



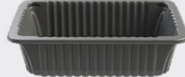
CT07-10-240



CT07-10-240NF



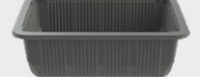
CT07-10-300NFW



CT07-10-300W-1



CT07-10-300W



CT07-10-350NF

Item No.	Description	Material	Color	Outside Dimen. (in.)	Height Pc. Ext. (in.)	Fl. Oz.	Case Pack	Case Weight	Cube (ft.3)	TI x HI
----------	-------------	----------	-------	----------------------	-----------------------	---------	-----------	-------------	-------------	---------

## #3 Footprint

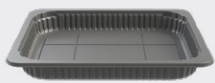
CT07-3-164NF	3 Tray 1.64 Black No Film	TFPP	Black	8.86 x 6.80	1.65	36.0	3000	212.7	46.67	1 x 2
CT07-3-164NFW-1	3 Tray 1.64 Black Wide Rib No Film	TFPP	Black	8.86 x 6.80	1.71	36.3	3000	218.7	46.67	1 x 2
CT07-3-164W-1	3 Tray 1.64 Black Wide Rib Film	TFPP	Black	8.86 x 6.80	1.71	36.3	3000	224.7	46.67	1 x 2
CT07-3-164SW	3 Tray 1.64 Step Black Film	TFPP	Black	8.86 x 6.80	1.65	32.6	2640	207.5	46.67	1 x 2
CT07-3-191NFW-2	3 Tray 1.91 Black Wide Rib No Film	TFPP	Black	8.86 x 6.80	1.96	40.0	3000	203.8	46.67	1 x 2
CT07-3-191W	3 Tray 1.91 Black Wide Rib Film	TFPP	Black	8.86 x 6.80	1.96	40.0	3000	245.5	46.67	1 x 2
CT07-3-200SW	3 Tray 2.00 Step Black Film	TFPP	Black	8.86 x 6.80	2.03	38.0	2640	207.5	46.67	1 x 2
CT07-3-300NFW	3 Tray 3.00 Black No Film	TFPP	Black	8.86 x 6.80	3.03	63.6	2640	286.2	46.67	1 x 2
CT07-3-450W-1	3 Tray 4.50 Black Wide Rib Film	TFPP	Black	8.86 x 6.80	4.57	89.1	2400	340.3	46.67	1 x 2

## #10 Footprint

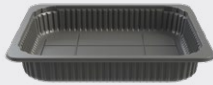
CT07-10-140W-1	10 Tray 1.40 Black Wide Rib Film	TFPP	Black	10.79 x 6.79	1.40	36.5	2400	220.1	46.67	1 x 2
CT07-10-200NF-1	10 Tray 2.00 Black Wide Rib No Film	TFPP	Black	10.79 x 6.79	2.09	55.8	2400	188.1	46.67	1 x 2
CT07-10-200W-1	10 Tray 2.00 Black Wide Rib Film	TFPP	Black	10.79 x 6.79	2.09	55.8	2400	214.3	46.67	1 x 2
CT07-10-240	10 Tray 2.40 Black Film	TFPP	Black	10.79 x 6.79	2.41	65.0	2112	252.1	46.67	1 x 2
CT07-10-240NF	10 Tray 2.40 Black No Film	TFPP	Black	10.79 x 6.79	2.41	65.0	2112	226.4	46.67	1 x 2
CT07-10-300NFW	10 Tray 3.00 Black Wide Rib No Film	TFPP	Black	10.79 x 6.79	3.09	79.9	2160	220.7	46.67	1 x 2
CT07-10-300W-1	10 Tray 3.00 Black Wide Rib Film	TFPP	Black	10.79 x 6.79	3.09	79.9	2160	273.2	46.67	1 x 2
CT07-10-300W	10 Tray 3.00 Black Film	TFPP	Black	10.79 x 6.79	3.03	80.3	2160	299.5	46.67	1 x 2
CT07-10-350NF	10 Tray 3.50 Black No Film	TFPP	Black	10.79 x 6.79	3.51	91.6	2016	297.7	46.67	1 x 2

Respect the Food!®

# Processor Case Ready Trays



CT07-FAM-150W



CT07-FAM-200W



CT07-FAM-250W



CT07-FAM-313NF



CT07-FAM-313W



CT07-UNIV-150W1



CT07-UNIV-200W1



CT07-UNIV-250NF



CT07-UNIV-250W

Item No.	Description	Material	Color	Outside Dimen. (in.)	Height Pc. Ext. (in.)	Fl. Oz.	Case Pack	Case Weight	Cube (ft.3)	TI x HI
----------	-------------	----------	-------	----------------------	-----------------------	---------	-----------	-------------	-------------	---------

### Family Footprint

CT07-FAM-150W	Family Tray 1.50 Black Film	TFPP	Black	12.46 x 10.35	1.56	79.7	1296	216.5	46.67	1 x 2
CT07-FAM-200W	Family Tray 2.00 Black Film	TFPP	Black	12.46 x 10.35	2.04	103.8	1296	233.2	46.67	1 x 2
CT07-FAM-250W	Family Tray 2.50 Black Film	TFPP	Black	12.46 x 10.35	2.59	131.3	1248	225.1	46.67	1 x 2
CT07-FAM-313NF	Family Tray 3.13 Black No Film	TFPP	Black	12.46 x 10.35	3.22	161.6	1248	278.7	46.67	1 x 2
CT07-FAM-313W	Family Tray 3.13 Black Film	TFPP	Black	12.46 x 10.35	3.22	161.6	1248	270.7	46.67	1 x 2

### Universal Footprint

CT07-UNIV-150W1	Univ Tray 1.50 Black Wide Rib Film	TFPP	Black	10.25 x 8.00	1.56	49.6	2000	214.2	46.67	1 x 2
CT07-UNIV-200W1	Univ Tray 2.00 Black Wide Rib Film	TFPP	Black	10.25 x 8.00	2.06	64.9	2000	222.4	46.67	1 x 2
CT07-UNIV-250NF	Univ Tray 2.50 Black No Film	TFPP	Black	10.25 x 8.00	2.51	81.3	1680	178.0	46.67	1 x 2
CT07-UNIV-250W	Univ Tray 2.50 Black Film	TFPP	Black	10.25 x 8.00	2.51	81.3	1680	209.9	46.67	1 x 2



Code Explanation		Temperature Range						
		Flash Freeze -40° F	Freezer -15°-15° F	Refrigerator 33°-47° F	Room Temp. 72° F	Warming Temp. 150°-200° F	Microwave 250° F	Oven 400° F
TFPP	Mineral-Filled Polypropylene	0° F ← → 250° F						

Product information is subject to change.

Note: These are typical values, based on testing and published guidelines. They are not intended for use as limiting specifications nor as a substitute for product testing under your specific conditions. D&W Fine Pack assumes no liability whatsoever in connection with the use of information or findings contained herein.

D&W Fine Pack LLC • 777 Mark Street • Wood Dale, Illinois 60191 • Phone: 800.849.4004  
Please contact customer service or email [customerservice@dwfp.com](mailto:customerservice@dwfp.com) to place an order or for any questions you may have about our product portfolio. All rights reserved by D&W Fine Pack LLC ©2020.



PCR-112020